

We are inclusive, confident, and enterprising learners who are brave, curious, optimistic, and kind. We are ready to embrace the future!



FRIDAY, 26TH MAY 2023

CONTACT US ON



01752 225314



<http://hydepark-inf.plymouth.sch.uk/>

<http://www.hydeparkjuniorschool.co.uk>



hydepark.office@horizonmat.com

Reception & YR6 Experience Week

The week of May 15th saw Reception and Year 6 children having a week of activities. In Reception, children enjoyed attending and watching Zog at the theatre. The children enjoyed the coach ride and were fascinated with the colourful scenery and spell-binding dramatics. The children also had the pleasure of having Vicky Green who brought the story of the Gingerbread Man to life with a retelling of the story through movements, masks and props. The children loved joining in with the rhyme 'run, run as fast as you can. You can't catch me I'm the Gingerbread Man!' Finally, they also had their Teddy Bear Picnic in our very own park! All the children had an amazing week of adventures.

Thanks to all the parent volunteers that assisted us throughout the week, this is greatly appreciated.

In YR6, the children enjoyed their residential where they participated in several activities including team building and activities linked to their learning in Geography for example. The children continued their week of activities by visiting the cinema, playing bowling, and having their picnic.

From the pictures, you will see how brave our YR6 children have been and what an amazing time they have had. This is an experience that they will remember for years to come.

All children have worked really hard this academic year and where resilient in their SATS.

Experience Weeks are built into our curriculum to bring aspects of learning to life whilst giving children the opportunity to link their learning to real life experiences, build their cultural capital and engage them in activities they may not always have the opportunity to participate in.

Thanks to all colleagues who planned and organised the activities for the children.



KIND HANDS, KIND FEET, KIND WORDS, KIND ACTIONS



We are inclusive, confident, and enterprising learners who are brave, curious, optimistic, and kind. We are ready to embrace the future!



KIND HANDS, KIND FEET, KIND WORDS, KIND ACTIONS



We are inclusive, confident, and enterprising learners who are brave, curious, optimistic, and kind. We are ready to embrace the future!

Eden Project Visit

Year 3 recently went to the Eden project as part of their learning in Geography and DT. The children got to design a packed lunch and then using grid references and navigational skills, to find out about the origins of food. The children learnt that bananas, cashews, oranges, and sugar have travelled more than 9000 km to get into the supermarkets in the UK! Cocoa originates in Ghana and has to travel first to Germany, before arriving to the UK. This information has got us thinking about living sustainably! ***What ideas do you have? These conversations can continue at home to further deepen the children's learning.***



KIND HANDS, KIND FEET, KIND WORDS, KIND ACTIONS



We are inclusive, confident, and enterprising learners who are brave, curious, optimistic, and kind. We are ready to embrace the future!

Water Safety

Children in YR 4 had a workshop on water safety recently. The children learnt what to do if they get into trouble and how to avoid it in the first place to keep themselves safe.



PSHRE


Children in YR2 in their PSHRE lessons recently, discussed what secrets are. The children know that some secrets should be kept but if a secret makes them feel worried, they should talk to an adult about it. The children looked at some scenarios and decided how they would advise a friend. This is an important topic to continue speaking to children at home about.





Holiday Club

Enjoy a happy and healthy holiday experience at Plymouth Life Centre!



AGES
8-12
YEARS


Our vibrant and varied holiday club provides a safe and fun environment where children can experience a wide range of activities.

May Half Term Dates
Tuesday 30 May | Wednesday 31 May
Thursday 1 June | Friday 2 June

Morning 8am to 9am - £2.50 | Core 9am to 3pm - £30.00
Afternoon 3pm to 5pm - £5.00 | Food Lunch & Snack - £4.00

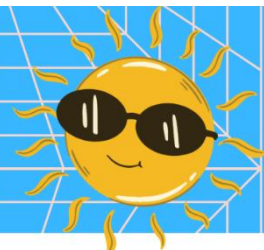
We are not able to offer any Fit and Fed spaces this ½ term but are offering discount places for those eligible for Fit and Fed.

To Book
Please email Katherine.Rowe@plymouth.gov.uk or visit reception at Plymouth Life Centre

 PlymouthActive (@plymouthactiveleisure)
 @plymouthactive
 Plymouth Active - YouTube

Plymouth Active manages these facilities in partnership with Plymouth City Council


DONATION DAYS!



We are looking for donations for Summer Fayre prizes! In particular, we would be grateful for:

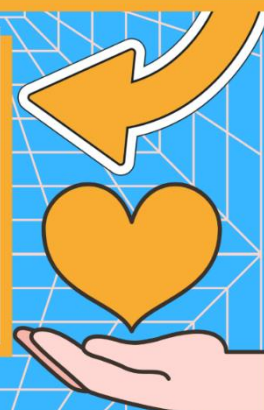
- Alcohol & Soft Drinks
- Chocolates
- Toys, Games & Puzzles (as new condition),
- Adults & children's books

WE WILL BE COLLECTING ALL DONATIONS IN THE INFANTS PLAYGROUND ON THE FOLLOWING DAYS:

Tuesday 2nd May - morning drop off 8.25-8.50am

Monday 22nd May - pick up in afternoon from 3.15pm

Friday 9th June - 8.25-8.50am & pick up in the afternoon from 3.15pm



KIND HANDS, KIND FEET, KIND WORDS, KIND ACTIONS



We are inclusive, confident, and enterprising learners who are brave, curious, optimistic, and kind. We are ready to embrace the future!

SHIPWRECKED

EMMANUEL HOLIDAY CLUB

24TH - 28TH JULY 2023

WHAT IS THE EMMANUEL HOLIDAY CLUB?

A week long fun packed adventure. The holiday club comprises of a drama performed by our very own volunteers, craft, refreshments, videos, singing, competitions, parties, and games all geared towards bible teaching.

Children will be put into small groups with DBS checked leaders who will guide and support them through the week.

The theme this year is SHIPWRECKED but not as you have seen it before. There will be pirates and ships and mayhem and adventure. Who knows where the story will go.

ARE YOU BRAVE ENOUGH TO CLIMB ABOARD THE SHIP WITH OUR SCURVY CREW?? OR WILL YOU TURN YOUR YELLOW BELLY BACK HOME AGAIN?? ONLY ONE WAY TO FIND OUT! SIGN UP TODAY

NITTY GRITY

Holiday club is for anyone of **primary school age**

Children arrive at **9:30** and collected promptly at **1:00 pm** by their designated adult. A breakfast club is provided and starts at 8:30, an added cost of £1 per child per day is required as well as booking.

We are charging **£40 per child for the whole week**, siblings can come at a discount of £30 per child. If finances are an issue, but you would still like your child to attend, please get in touch with Holly Martin at Emmanuel.

Please use this link to book your place <https://airtable.com/shr39KQgoT8nqN>

We are limiting the numbers to 60 places this year on a first come first served basis. Once your place is booked we will be in touch to let you know if you secured a place and how to make your payment.

On the last day we hope to have a BBQ, free of charge, for the whole family. We will send out a link closer to the time so you can book in for that.

WE LOOK FORWARD TO MEETING YOU AND YOUR FAMILY.
Any questions please contact Holly at holly.martin@emmanuelplymouth.co.uk



June

Week of the 5 th	Child Safety Week, Women's World Cup Football, YR4 Multiplication Assessment begins
Monday, 5 th	All children return to school
Thursday, 8 th	World Ocean's Day
Week of the 12 th	National Home Fire Safety Week

WE NEED YOU!

HYDE PARK SUMMER FAYRE

Saturday 8th July 10am-2pm

Plans are underway to make this year's Summer Fayre amazing, but we need you!

We are looking for

- Face painter
- Magician/ entertainers
- Ice cream van
- Raffle prizes
- Bakers of all things yummy

Do you think you can help?

If you think you can help, or know someone who can, please email us!

Hydeparksummerfayre@gmail.com

KIND HANDS, KIND FEET, KIND WORDS, KIND ACTIONS



We are inclusive, confident, and enterprising learners who are brave, curious, optimistic, and kind. We are ready to embrace the future!



Cedar	Jayden
Ash	Lottie
Oak	Lily
Beech	Sienna R
Poplar	Rafe
Willow	Maeliss
Holly	Theo
Elm	Isaac W
Sycamore	Myra
Keller	Anna
Seacole	Nuala
Barnardo	Thomas
Attenborough	Oskar K
Curie	Suri
Hawking	Elsie
Gandhi	Whole Class
King	Joshua
Mandela	Sam
Pankhurst	Owen
Douglass	David
Dickens	Jayden

Nominations for being a brave learner

Cedar	Damir
Ash	Nara
Oak	Isaac
Beech	Harriet
Poplar	Sienna S
Willow	Neve
Holly	Jax
Elm	Sara
Sycamore	Coco
Keller	Jaijit
Seacole	Emily
Barnardo	Deborah
Attenborough	Jaxon
Curie	Tom
Hawking	Agnese
Gandhi	Sophia K
King	Lucy
Mandela	Logan
Pankhurst	Chloe
Douglass	Bobby W
Dickens	David

KIND HANDS, KIND FEET, KIND WORDS, KIND ACTIONS



We are inclusive, confident, and enterprising learners who are brave, curious, optimistic, and kind. We are ready to embrace the future!

KIND HANDS, KIND FEET, KIND WORDS, KIND ACTIONS

